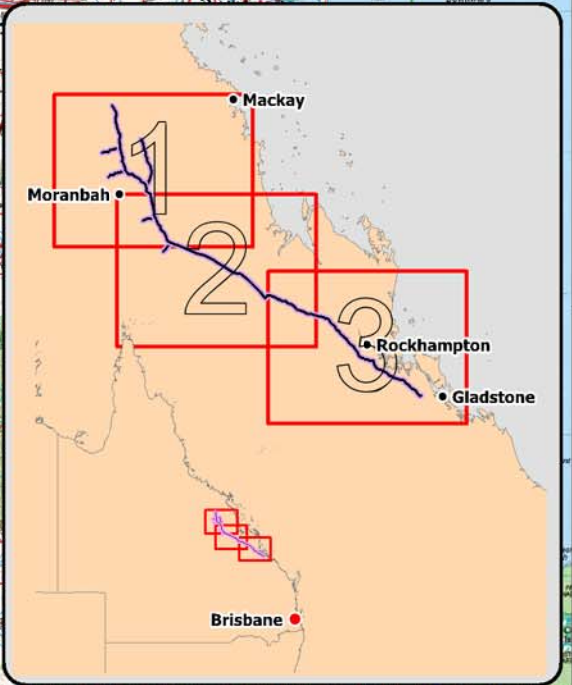
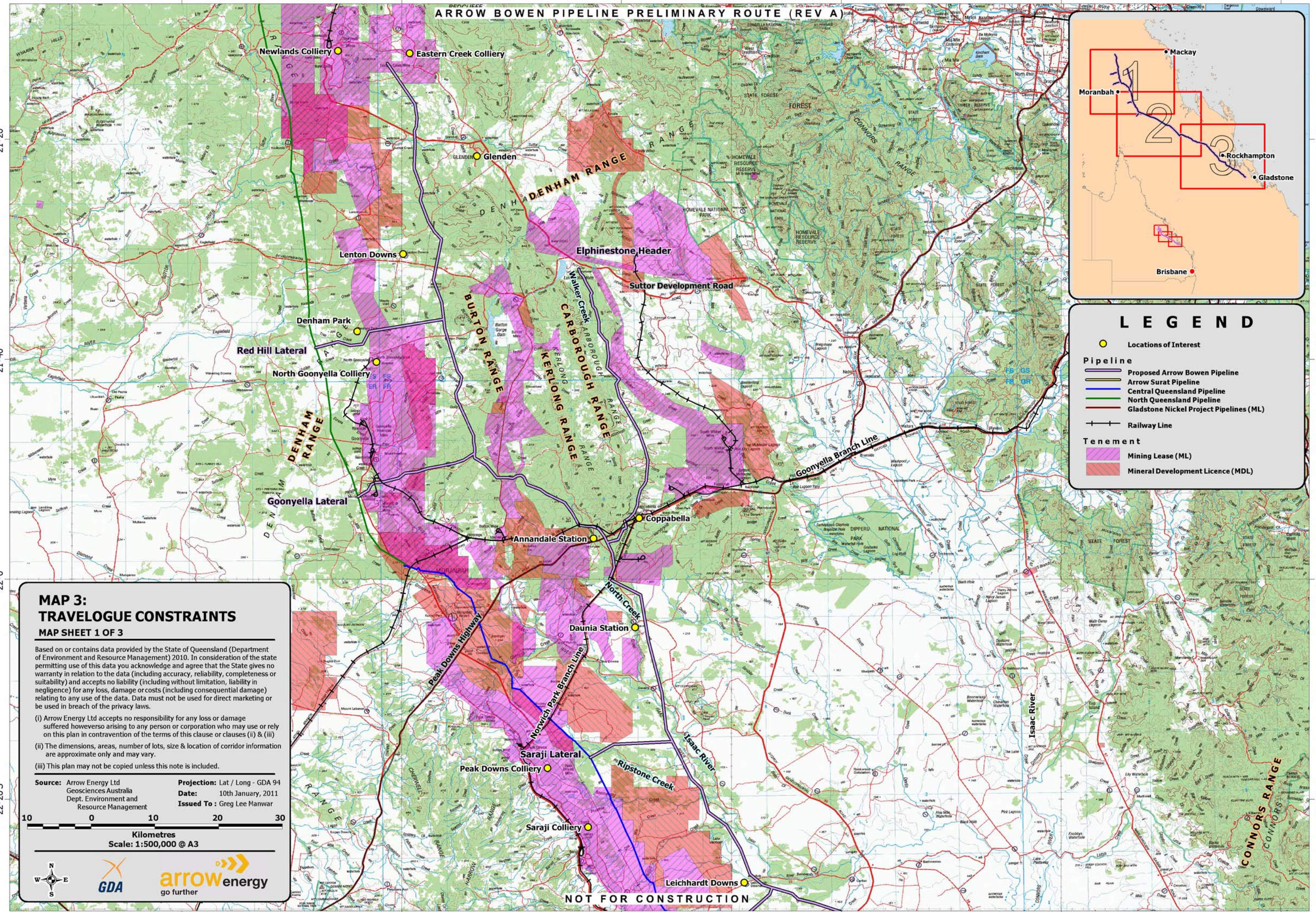


ARROW BOWEN PIPELINE PRELIMINARY ROUTE (REV A)



LEGEND

- Locations of Interest
- Pipeline**
 - Proposed Arrow Bowen Pipeline
 - Arrow Surat Pipeline
 - Central Queensland Pipeline
 - North Queensland Pipeline
 - Gladstone Nickel Project Pipelines (ML)
- Railway Line
- Tenement**
 - Mining Lease (ML)
 - Mineral Development Licence (MDL)

MAP 3: TRAVELOGUE CONSTRAINTS MAP SHEET 1 OF 3

Based on or contains data provided by the State of Queensland (Department of Environment and Resource Management) 2010. In consideration of the state permitting use of this data you acknowledge and agree that the State gives no warranty in relation to the data (including accuracy, reliability, completeness or suitability) and accepts no liability (including without limitation, liability in negligence) for any loss, damage or costs (including consequential damage) relating to any use of the data. Data must not be used for direct marketing or be used in breach of the privacy laws.

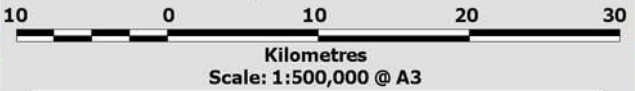
- (i) Arrow Energy Ltd accepts no responsibility for any loss or damage suffered however arising to any person or corporation who may use or rely on this plan in contravention of the terms of this clause or clauses (ii) & (iii)
- (ii) The dimensions, areas, number of lots, size & location of corridor information are approximate only and may vary.
- (iii) This plan may not be copied unless this note is included.

Source: Arrow Energy Ltd
Geosciences Australia
Dept. Environment and Resource Management

Projection: Lat / Long - GDA 94

Date: 10th January, 2011

Issued To : Greg Lee Manwar



NOT FOR CONSTRUCTION