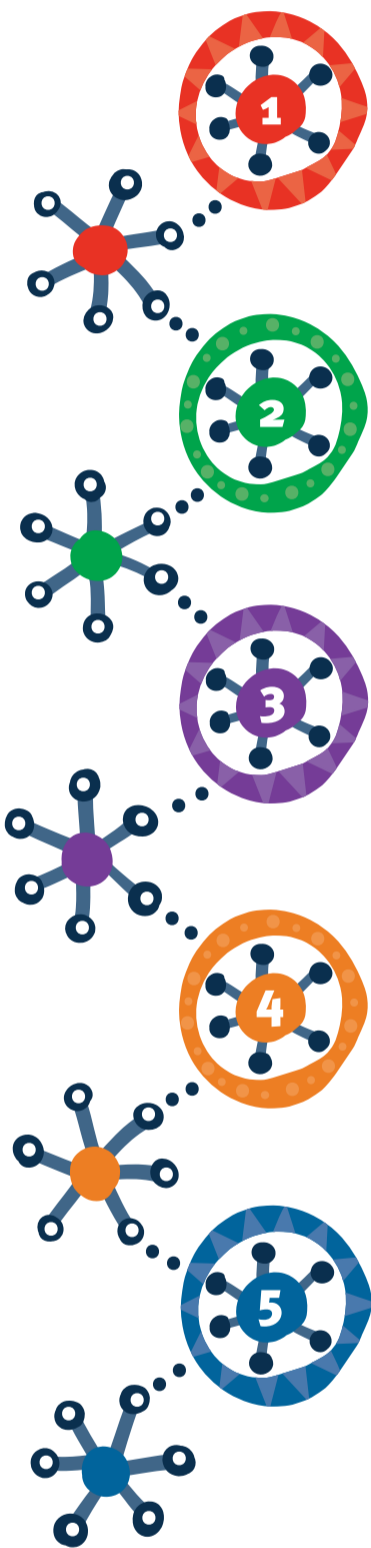


How we can support you if you need to travel for health reasons?

If you need to travel to a health service outside of your community, you may be able to get some financial help from the Patient Travel Subsidy Scheme (PTSS). Patients, and those helping them, can follow the 5 steps below to find out what you need to do.

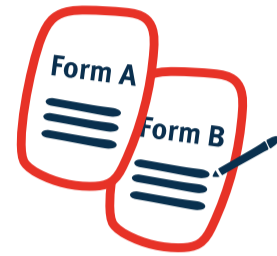


Applying

The patient and health worker need to fill out:

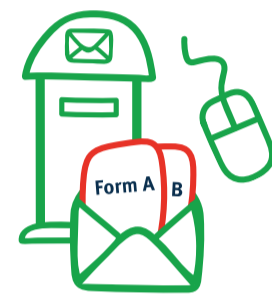
- **Form A** (PTSS Patient Registration), and
- **Form B** (PTSS Travel Referral).

These forms let them apply for financial help to cover the cost of your travel and accommodation, and if approved for someone to travel with you.



Checking

Your application will be checked, and we will let you know what financial support you will receive.



Booking

Once you have your appointment date, you should contact your local public hospital or public health service about travel bookings.

If you are booking your own travel or accommodation, make sure you keep all of your tax invoices.



Attending

When you have your appointment, make sure **Form C** (PTSS Appointment Attendance) is filled out and signed by the specialist or someone else at the service.



Receiving Payment

If you have a subsidy claim, you need to submit **Form C** (the signed PTSS Appointment Attendance), along with any tax invoices from travel and accommodation bookings.

You should receive your payment within 30 business days.



For more information, please visit: www.health.qld.gov.au/ptss or call 13 43 25 84 (or in some areas 13 43 25)

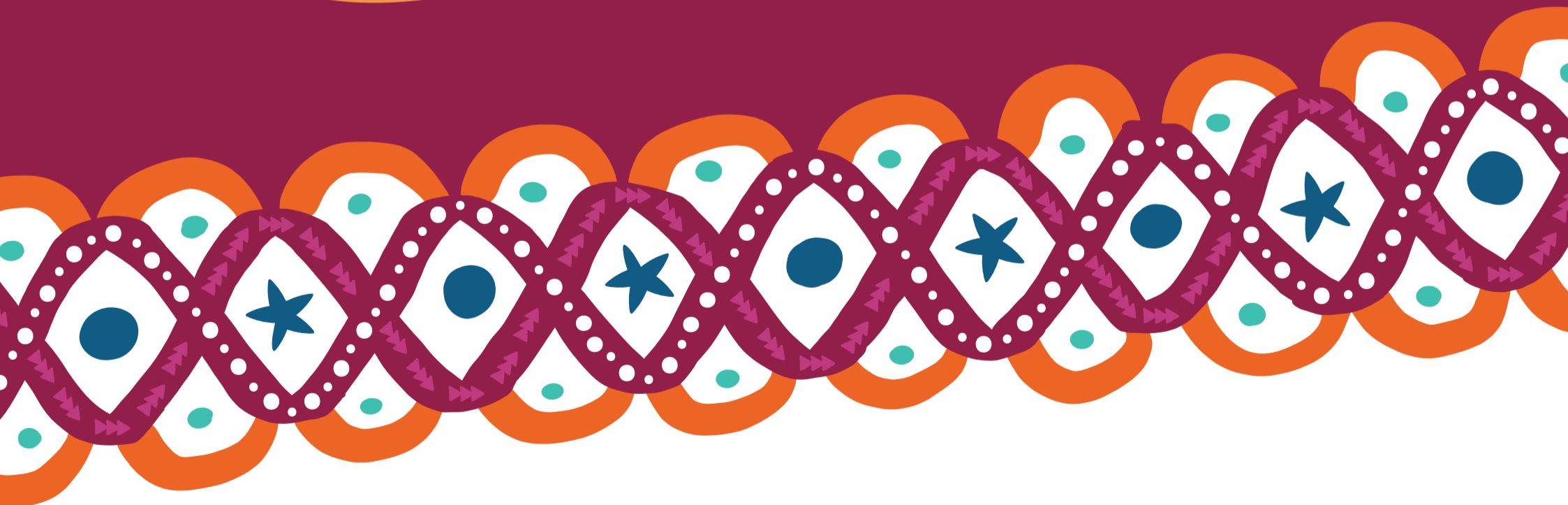
You can also get more information from your local health clinic.



Queensland
Government

Did you need to travel more than 50km to a health service?

If you have been told you need to go to a medical service outside of your community, you may be able to get some financial help.



For more information, please visit: www.health.qld.gov.au/ptss
or call 13 43 25 84 (or in some areas 13 43 25)

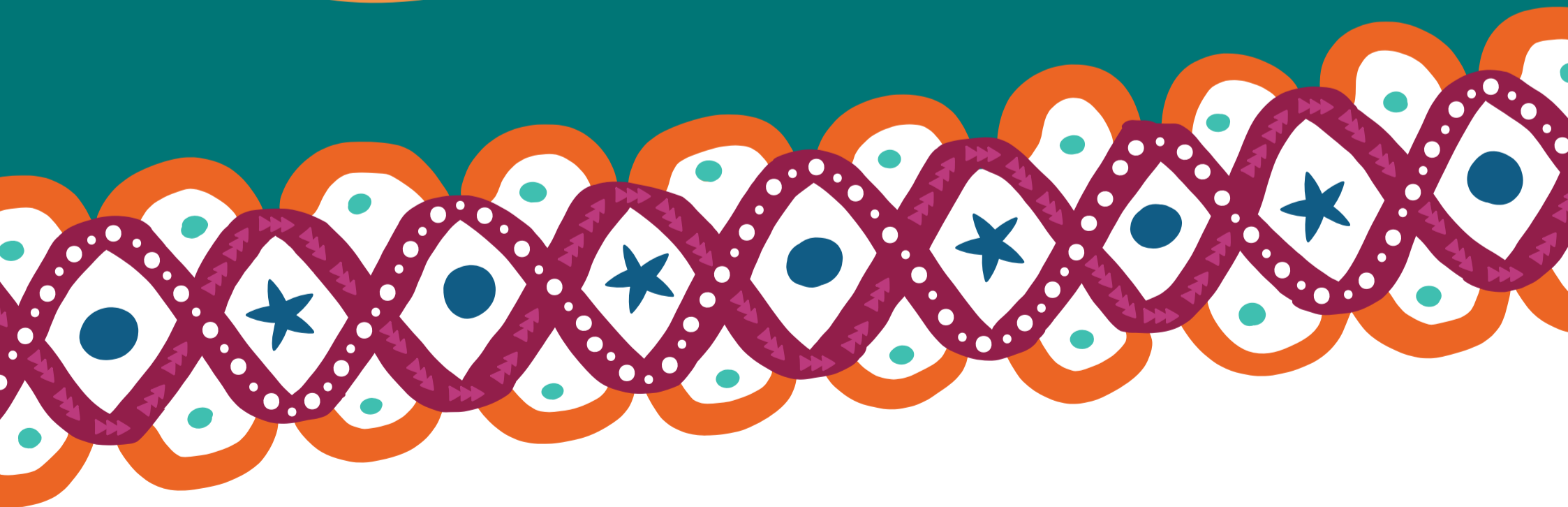
You can also get more information from your local health clinic.



**Queensland
Government**

Do you need to travel to a health service?

If you have been told you need to go to a medical service outside of your community, you may be able to get some financial help.



For more information, please visit www.health.qld.gov.au/ptss or call 13 43 25 84 (or in some areas 13 43 25)

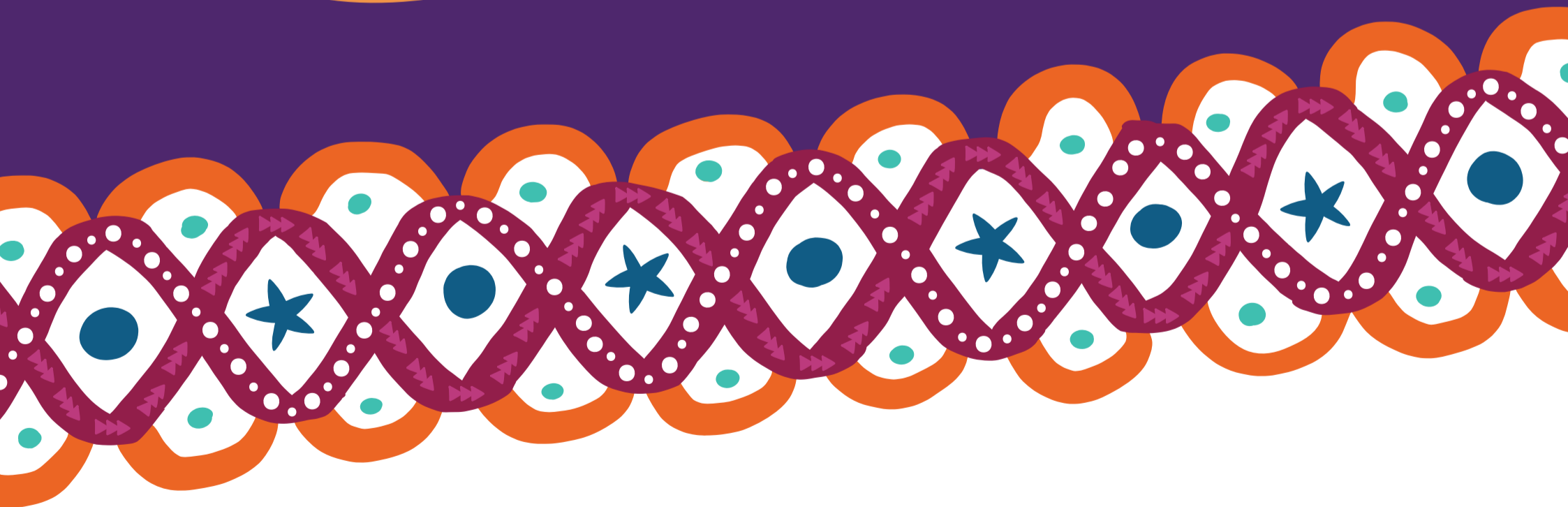
You can also get more information from your local health clinic.



Queensland
Government

Do you need to travel more than 50km to visit a health service?

If you have been told you need to go to a medical service outside of your community, you may be able to get some financial help.



For more information, please visit www.health.qld.gov.au/ptss or call 13 43 25 84 (or in some areas 13 43 25)

You can also get more information from your local health clinic.



Queensland
Government