

# Erosion Prone Area

## Sunshine Coast Region Local Government Area

### Erosion Prone Area Definition

1. Erosion prone areas are deemed to exist over all tidal water to the extent of Queensland Coastal Waters and on all land adjacent to tidal water.
2. Erosion prone areas include areas subject to inundation by the highest astronomical tides (HAT) by the year 2100 or at risk from sea erosion.
3. On land adjacent to tidal water the landward boundary of the erosion prone area shall be defined by whichever of the following methods gives the greater erosion prone area width:
  - a. a line measured 40 metres landward of the plan position of the present day HAT level except where approved revetments exist in which case the line is measured 10 metres landward of the upper seaward edge of the revetment, irrespective of the presence of outcropping bedrock;
  - b. a line located by the linear distance shown on Table 1 and measured, unless specified otherwise, inland from:
    - i. the seaward toe of the frontal dune (the seaward toe of the frontal dune is normally approximated by the seaward limit of terrestrial vegetation or, where this cannot be determined, the level of present day HAT); or
    - ii. a straight line drawn across the mouth of a waterway between the alignment of the seaward toe of the frontal dune on either side of the mouth
  - c. the plan position of the level of HAT plus 0.8 m vertical elevation.

Except:

- i. where the linear distance specified in 3b is less than 40 metres, in which case section 3a. does not apply and the erosion prone area width will be the greater of 3b and 3c; or
  - ii. where outcropping bedrock is present and no approved revetments exist, in which case the line is defined as being coincident with the most seaward bedrock outcrop at the plan position of present day HAT plus 0.8m; or
  - iii. in approved canals in which case the line of present day HAT applies, irrespective of the presence of approved revetments or outcropping bedrock.
4. Erosion prone areas defined in accordance with the above are deemed to exist throughout all the local government areas, irrespective of whether the entire local government area is depicted on erosion prone area plans for the area.

### Notes to clarify the definition

1. The specific location along the coast to which each erosion prone area linear distance applies (a segment) is shown in Table 1.
2. A map indicating the approximate location along the coast of each linear distance segment is attached.
3. Each erosion prone area segment is located on the coastline between 2 points defined by latitude and longitude. A projection of each point to the nearest actual coastline and continuing inland perpendicular to the coast defines the erosion prone area segment.
4. "Present day HAT" in the definition is always taken to be the present day level of HAT for the coastline as defined in the Queensland Tide Tables for that year or as defined by empirical methodology at the site.
5. The extent of the erosion prone area where it is defined by "HAT plus 0.8m" is the HAT coastline at the year 2100 and includes sea level rise to that time. It is determined by the area of land inundated to the level HAT of the nearest adjacent open coast or river tide gauge plus 0.8m vertical elevation. Site based HAT is not to be used as present day attenuation of inland HAT level due to flow constraints may not persist to 2100 with coastline response to sea level rise. For further explanation see the Coastal Hazard Technical Guide.
6. Where noted on Table 1 (and the map) the specified linear distance applies except where a revetment has been constructed and maintained to the approved design in which case the landward boundary of the erosion prone area is at the upper seaward edge of the revetment (A-line).
7. The approximate erosion prone area footprint is shown on Coastal Hazard Area Maps available on the Department of Environment and Heritage Protection website at [www.ehp.qld.gov.au](http://www.ehp.qld.gov.au). These footprints are indicative only and the definition in this plan prevails for any inconsistency between the two.
8. This erosion prone area plan may be updated from time to time and a new revision created. Please check with the Department of Environment and Heritage Protection or the local government that this copy is the current version prior to using the contained information in any way.

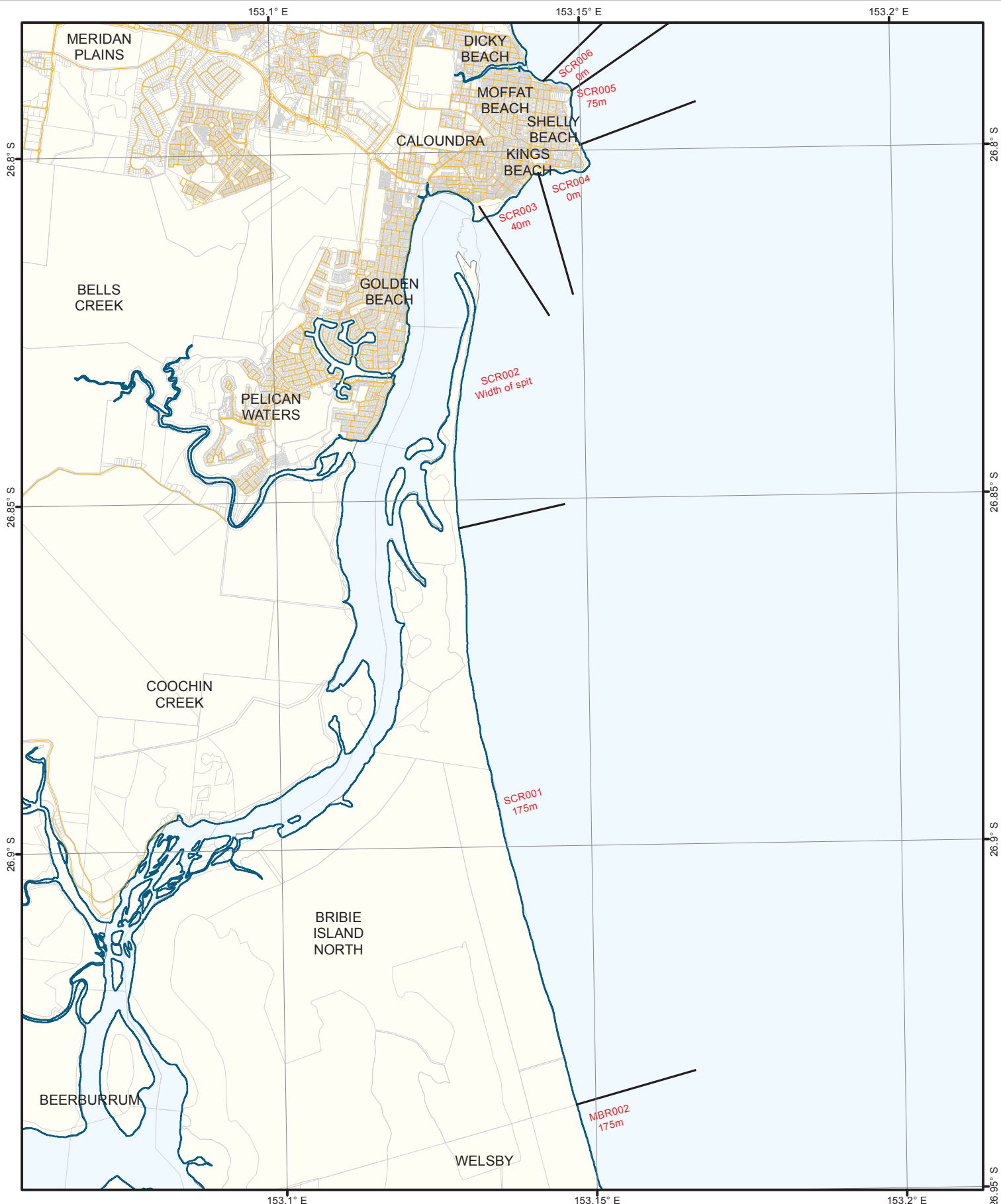
**Date of Erosion Prone Area Declaration: 8 July 2015**

**Date of Erosion Prone Area Amendment:**

**Plan No:  
SCR3A**

SCR3A Table 1: Linear distances for the erosion prone area and the specific location of each segment

<b>Erosion prone area segment number</b>	<b>Segment start latitude (degrees)</b>	<b>Segment start longitude (degrees)</b>	<b>Segment end latitude (degrees)</b>	<b>Segment end longitude (degrees)</b>	<b>Erosion prone area linear distance (Width in metres)</b>
SCR001	153.14683	-26.93736	153.12929	-26.85417	175m
SCR002	153.12929	-26.85417	153.13348	-26.80777	Width of spit
SCR003	153.13348	-26.80777	153.14305	-26.80308	40m
SCR004	153.14305	-26.80308	153.14969	-26.79924	0m
SCR005	153.14969	-26.79924	153.14852	-26.79149	75m
SCR006	153.14852	-26.79149	153.14402	-26.79002	0m
SCR007	153.14402	-26.79002	153.13803	-26.77795	160m
SCR008	153.13803	-26.77795	153.13664	-26.76594	190m
SCR009	153.13664	-26.76594	153.13652	-26.76328	400m
SCR010	153.13652	-26.76328	153.13555	-26.74432	190m
SCR011	153.13555	-26.74432	153.13821	-26.68119	175m
SCR012	153.13821	-26.68119	153.13409	-26.68167	0m
SCR013	153.13409	-26.68167	153.11559	-26.67566	145m
SCR014	153.11559	-26.67566	153.11021	-26.67162	0m
SCR015	153.11021	-26.67162	153.10118	-26.65082	205m
SCR016	153.10118	-26.65082	153.10186	-26.63613	Width of spit
SCR017	153.10170	-26.63613	153.10267	-26.54672	140m
SCR018	153.10267	-26.54672	153.09857	-26.54237	0m
SCR019	153.09857	-26.54237	153.09565	-26.53732	175m Possible Bedrock
SCR020	153.09565	-26.53732	153.09393	-26.53416	0m
SCR021	153.09393	-26.53416	153.09555	-26.49857	175m



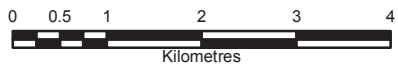
### Erosion Prone Area Linear Distances and their Locations for Sunshine Coast Region Local Government Area

**Note:**  
This map is a representation of the erosion prone area segment locations provided in Table 1 and should be used as a guide only.

**Disclaimer:**  
Whilst every care is taken to ensure the accuracy of this product, the Department of Environment and Heritage Protection makes no representations or warranties about its accuracy, reliability, completeness or suitability for any particular purpose and disclaims all responsibility and all liability (including without limitation, liability in negligence) for all expenses, losses, damages (including indirect or consequential damage) and costs which you may incur as a result of the product being inaccurate or incomplete in any way and for any reason.

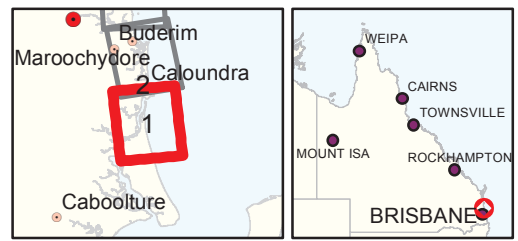
**SCR006** Segment number and linear distance for erosion prone area  
**100m**

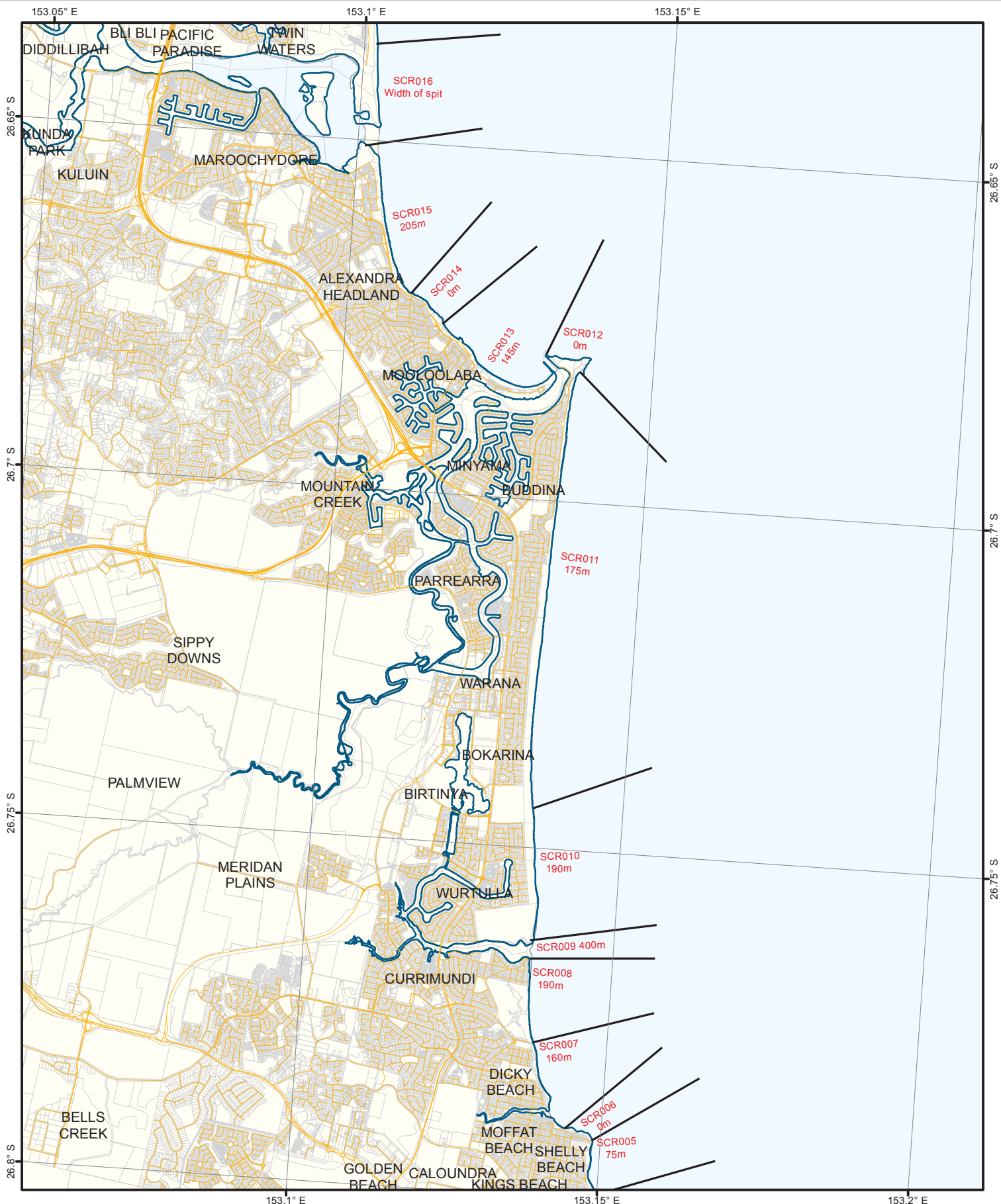
- Erosion Prone Area segment start/stop location
- Roads
- Queensland coast
- Cadastral boundaries



# SCR3A Map 1

Projection: Albers. Datum: GDA 1994.





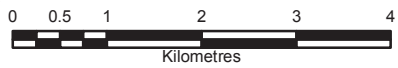
### Erosion Prone Area Linear Distances and their Locations for Sunshine Coast Region Local Government Area

**Note:**  
This map is a representation of the erosion prone area segment locations provided in Table 1 and should be used as a guide only.

**Disclaimer:**  
Whilst every care is taken to ensure the accuracy of this product, the Department of Environment and Heritage Protection makes no representations or warranties about its accuracy, reliability, completeness or suitability for any particular purpose and disclaims all responsibility and all liability (including without limitation, liability in negligence) for all expenses, losses, damages (including indirect or consequential damage) and costs which you may incur as a result of the product being inaccurate or incomplete in any way and for any reason.

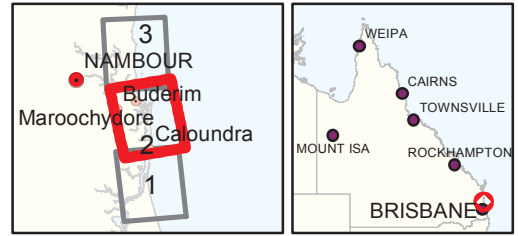
**SCR006** Segment number and linear distance for erosion prone area  
**100m**

- Erosion Prone Area segment start/stop location
- Roads
- Queensland coast
- Cadastral boundaries

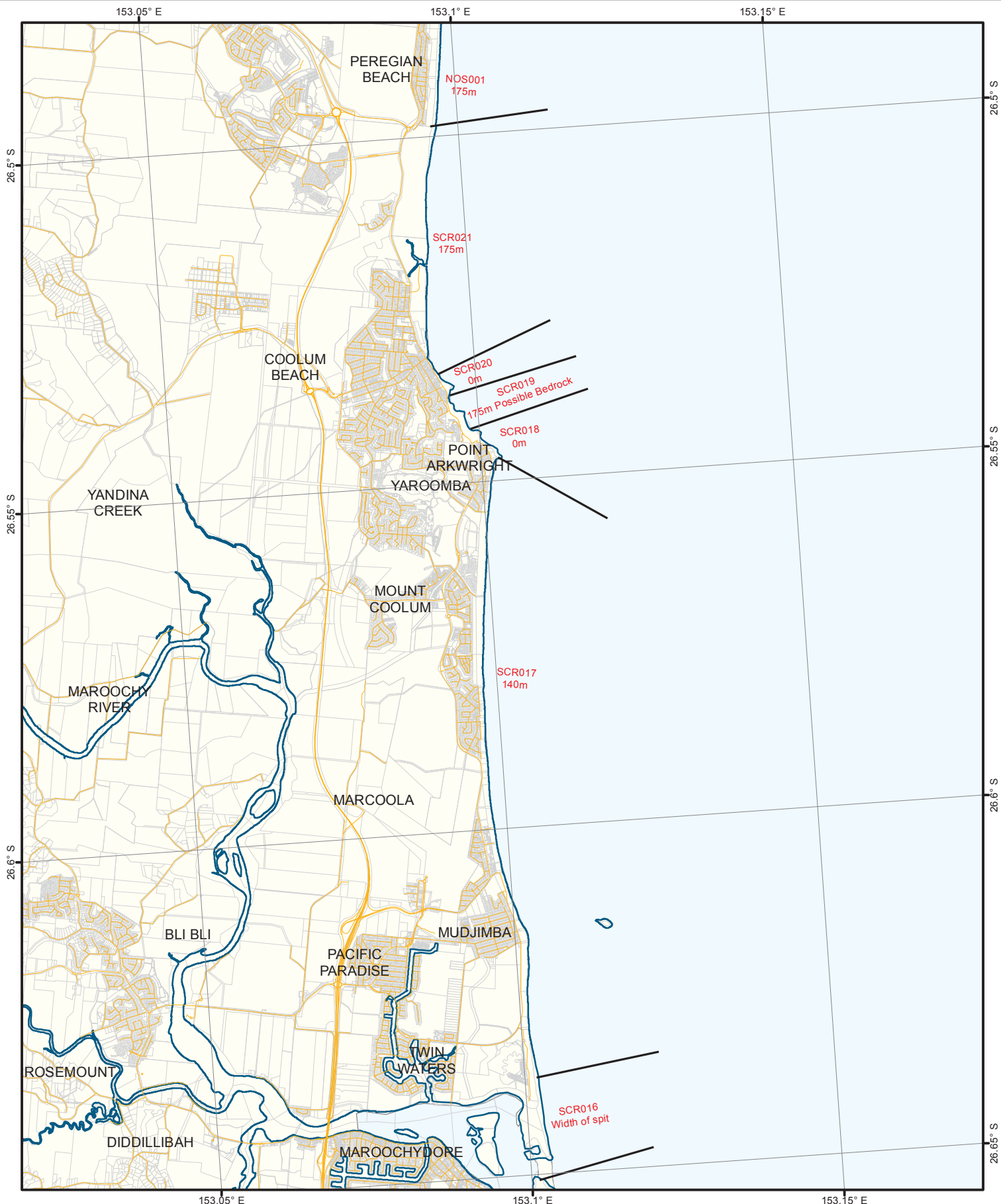


## SCR3A Map 2

Projection: Albers. Datum: GDA 1994.







### Erosion Prone Area Linear Distances and their Locations for Sunshine Coast Region Local Government Area

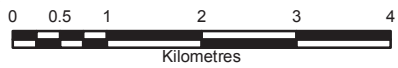
### SCR3A Map 3

**Note:**  
This map is a representation of the erosion prone area segment locations provided in Table 1 and should be used as a guide only.

**Disclaimer:**  
Whilst every care is taken to ensure the accuracy of this product, the Department of Environment and Heritage Protection makes no representations or warranties about its accuracy, reliability, completeness or suitability for any particular purpose and disclaims all responsibility and all liability (including without limitation, liability in negligence) for all expenses, losses, damages (including indirect or consequential damage) and costs which you may incur as a result of the product being inaccurate or incomplete in any way and for any reason.

**SCR006** Segment number and linear distance for erosion prone area  
**100m**

- Erosion Prone Area segment start/stop location
- Roads
- Queensland coast
- Cadastral boundaries



Projection: Albers. Datum: GDA 1994.

