

GOTHENBURG

Sketch map of wreck site
(key on reverse)

Sketch adapted with permission
from a plan drawn by
Queensland Museum



Site conditions vary and will affect how much of the wreck and its relics can be seen. If you notice something suspicious or see items not marked on the plan, please contact EHP.

Help protect shipwrecks!

In Australia, all shipwrecks and their associated relics that are older than 75 years are protected by law. Shipwrecks are underwater museums that reflect the history of discovery, trade and colonisation and provide important scientific, historical and educational information. When artefacts are removed from a shipwreck, valuable archaeological information is lost forever. Shipwrecks are fragile and once lost, cannot be replaced.

Interfering with or damaging shipwrecks is prohibited. The most common actions that damage or interfere with shipwrecks include:

- divers holding on to fragile structures
- divers uncovering parts of the wreck by digging or 'hand fanning'
- taking anything from a shipwreck site
- anchoring on a shipwreck
- attaching lines directly to a shipwreck.



**Take only photos,
leave only bubbles!**

The Great Barrier Reef is a unique underwater playground for divers. Protecting these precious marine areas and their natural and cultural heritage is everyone's responsibility. Visit www.qld.gov.au to find shipwreck locations on the reef, or visit www.reeffacts.qld.gov.au for information about how the iconic Great Barrier Reef world heritage area is being protected.

Your safety is your responsibility.

DIVE into history QUEENSLAND'S SHIPWRECKS



Gothenburg (1875)

#30550

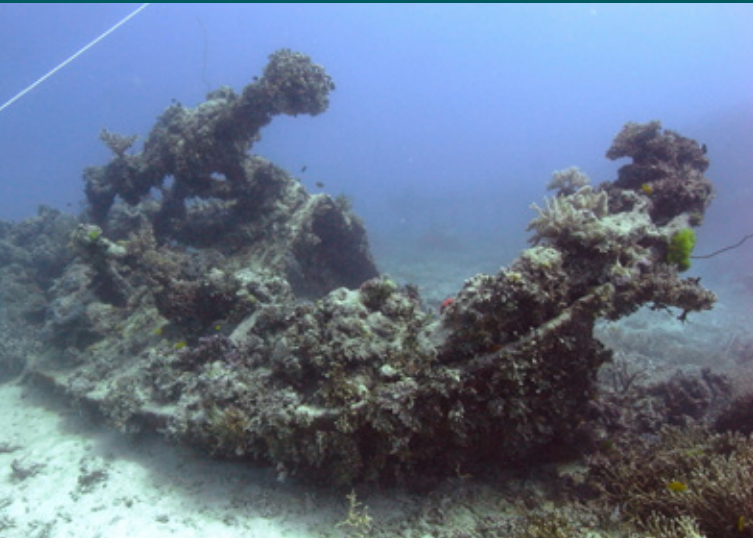
Anyone with information or queries about Queensland's historic shipwrecks should email archaeology@ehp.qld.gov.au



Australian Government
Department of the Environment



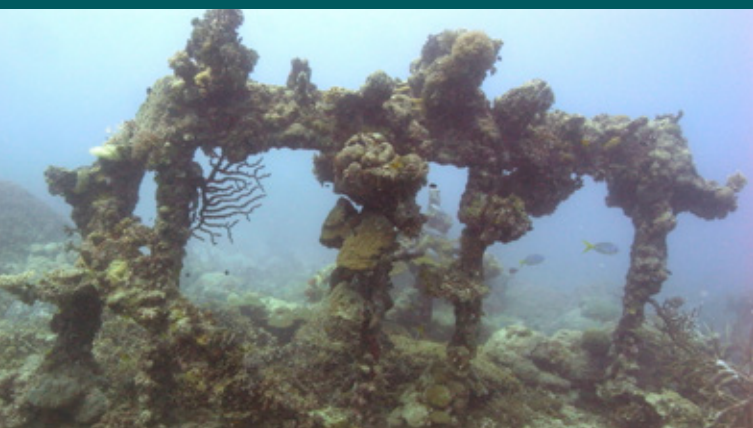
Queensland
Government



▼ Double boiler



▼ Vertical deck beams



Gothenburg (1875)

Vessel type Iron, single screw steamer
Built United Kingdom, 1854
Dimensions Length: 196.6ft Width: 28.2ft
 Depth: 10.6ft Tonnage: 458.0

General information

The *Gothenburg* was bound from Port Darwin to Melbourne via Newcastle with 128 passengers, mail and a general cargo. On 23 February 1875 during a storm and high seas, the *Gothenburg* ran aground on the southern edge of a detached reef, off the entrance to Flinders Channel, near Townsville. The ship's four lifeboats were lowered; however the first two accidentally came adrift during the confusion and strong winds swept the boats away before passengers could board. A third boat with women and children capsized when others panicked and tried to board. Passengers and crew fought for their lives as the steamer broke up and by morning, only the masts could be seen above the water. Twenty-two passengers were rescued but 106 lives were lost including all 25 women and children and all the officers on board.

Site map of *Gothenburg*

The site is dominated by the two large boilers and deck beams. Other remains include: oscillating engines, two iron tanks, donkey boiler and a winch.

Site marine life

The *Gothenburg's* superstructure is a habitat which provides food and shelter for a variety of marine life including soft and hard corals, anemones, clownfish, coral trout, cods, sea perch, black tip reef sharks and other reef fish.



This shipwreck diver guide was produced by the Department of Environment and Heritage Protection (EHP) to increase community awareness and to help protect, manage, and interpret Queensland's unique underwater cultural heritage.

Dive site information

Dive rating The *Gothenburg* is suitable for advanced and experienced divers.

Protected zone Radius: 200m

Note: The *Gothenburg* is in a protected zone and requires a permit to dive. A protected zone helps to protect shipwrecks, and the fragile and archaeologically important sites in which they are situated, from interference and damage.

Dive permits are free. Application forms can be completed online: www.environment.gov.au

Location The wreck lies on the western edge of Old Reef, approximately 27 nautical miles east of Cape Upstart in the Great Barrier Reef.

Max depth 30m **AVG depth** 15m



AVG visibility 12-20m

Current The site can be affected by currents of up to 1 knot and should only be dived in good sea conditions.

Anchoring Avoid damaging the *Gothenburg* by anchoring away from the shipwreck and letting the boat hang back over the site. Use a shot line to mark the site if necessary.

Note: It is important to remember that the *Gothenburg* is the final resting place for 106 people. Please be respectful when diving.

Gothenburg map key

- | | | | |
|---|-------------|---|-------------------|
|  | frames |  | stern section |
|  | davits |  | engine components |
|  | tank |  | hull plates |
|  | boiler |  | capstan |
|  | hawse |  | bollard |
|  | bow section |  | copper pipe |

*Artefacts not to scale

