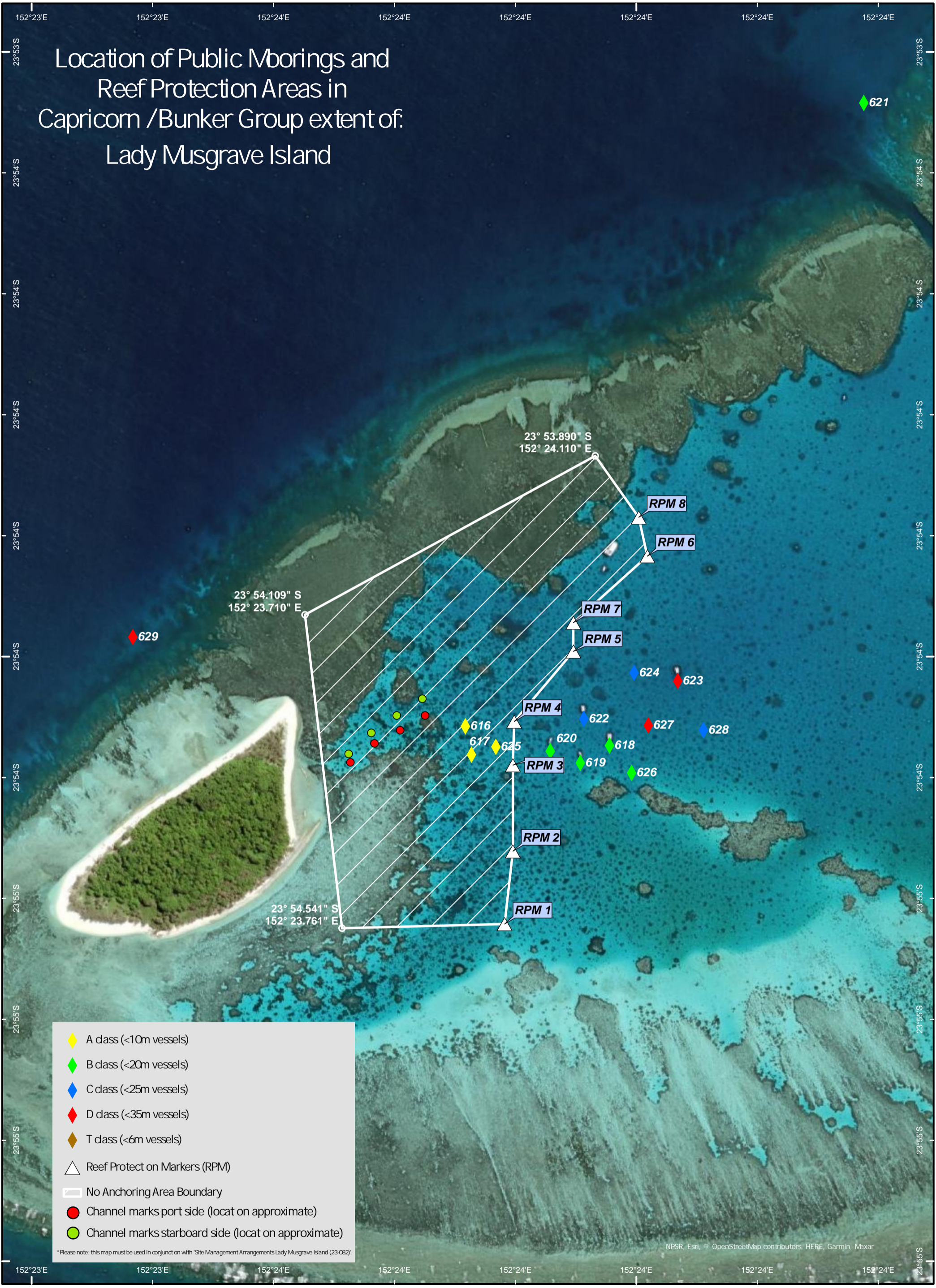


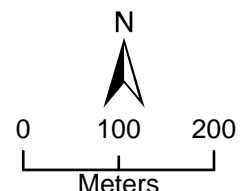
# Location of Public Moorings and Reef Protection Areas in Capricorn /Bunker Group extent of: Lady Musgrave Island



- ◆ A class (<10m vessels)
- ◆ B class (<20m vessels)
- ◆ C class (<25m vessels)
- ◆ D class (<35m vessels)
- ◆ T class (<6m vessels)
- △ Reef Protection Markers (RPM)
- No Anchoring Area Boundary
- Channel marks port side (locat on approximate)
- Channel marks starboard side (locat on approximate)

\*Please note: this map must be used in conjunct on with "Site Management Arrangements Lady Musgrave Island (23-082)".

NPSR, Esri, © OpenStreetMap contributors, HERE, Garmin, Maxar



COORDINATE SYSTEM: GCS GDA 1994  
HORIZONTAL DATUM: GDA 1994