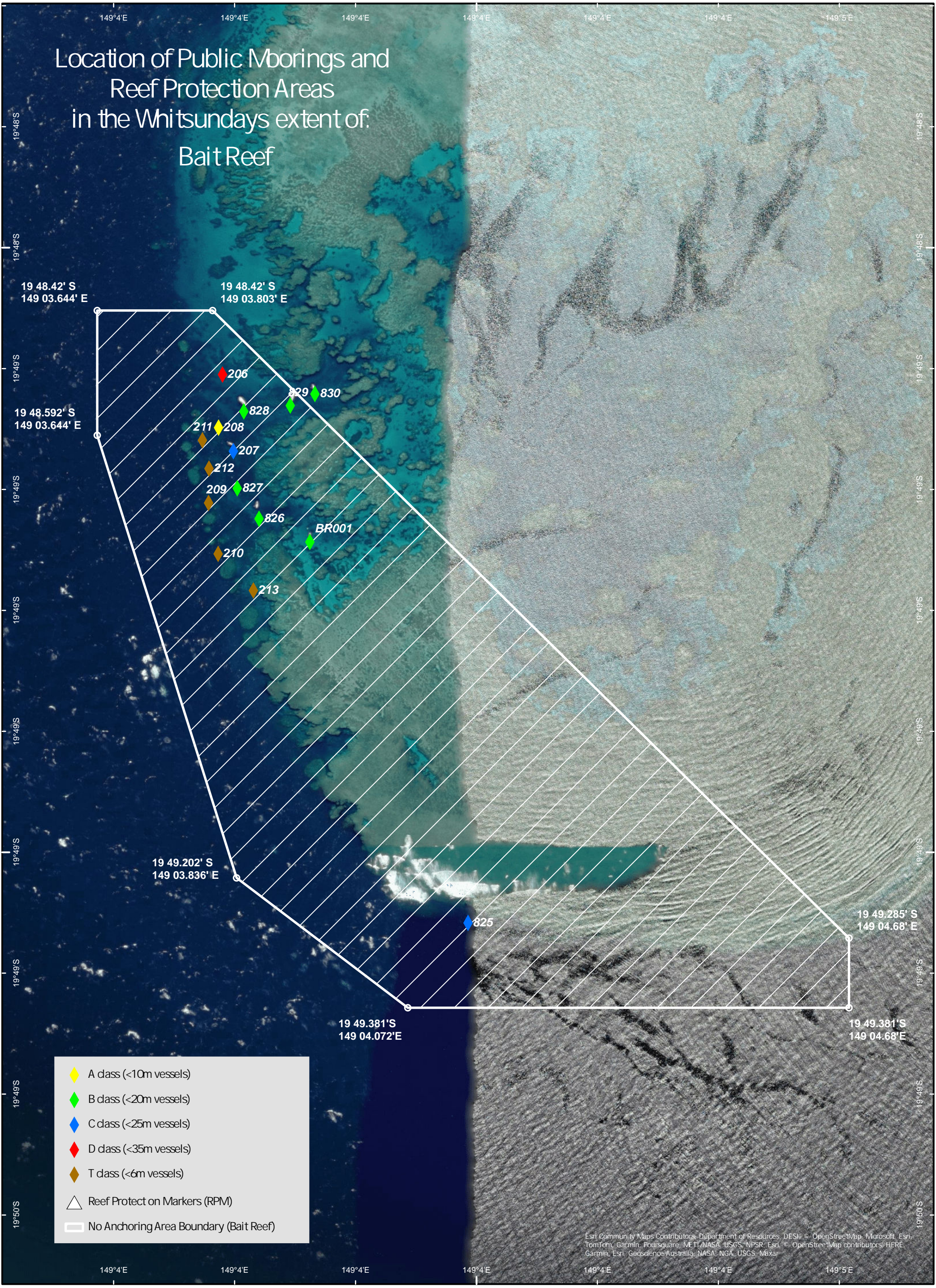
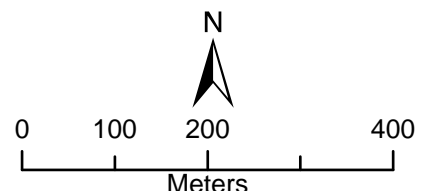


Location of Public Moorings and Reef Protection Areas in the Whitsundays extent of: Bait Reef



- ◆ A class (<10m vessels)
- ◆ B class (<20m vessels)
- ◆ C class (<25m vessels)
- ◆ D class (<35m vessels)
- ◆ T class (<6m vessels)
- Reef Protection Markers (RPM)
- No Anchoring Area Boundary (Bait Reef)

Esri Community Maps Contributors, Department of Resources, DESI, © OpenStreetMap, Microsoft, Esri, TomTom, Garmin, Poursquare, METI, NASA, USGS, NPSR, Esri, © OpenStreetMap contributors, HERE, Garmin, Esri, Geoscience Australia, NASA, NGA, USGS, Maxar



COORDINATE SYSTEM: GCS GDA 1994
HORIZONTAL DATUM: GDA 1994