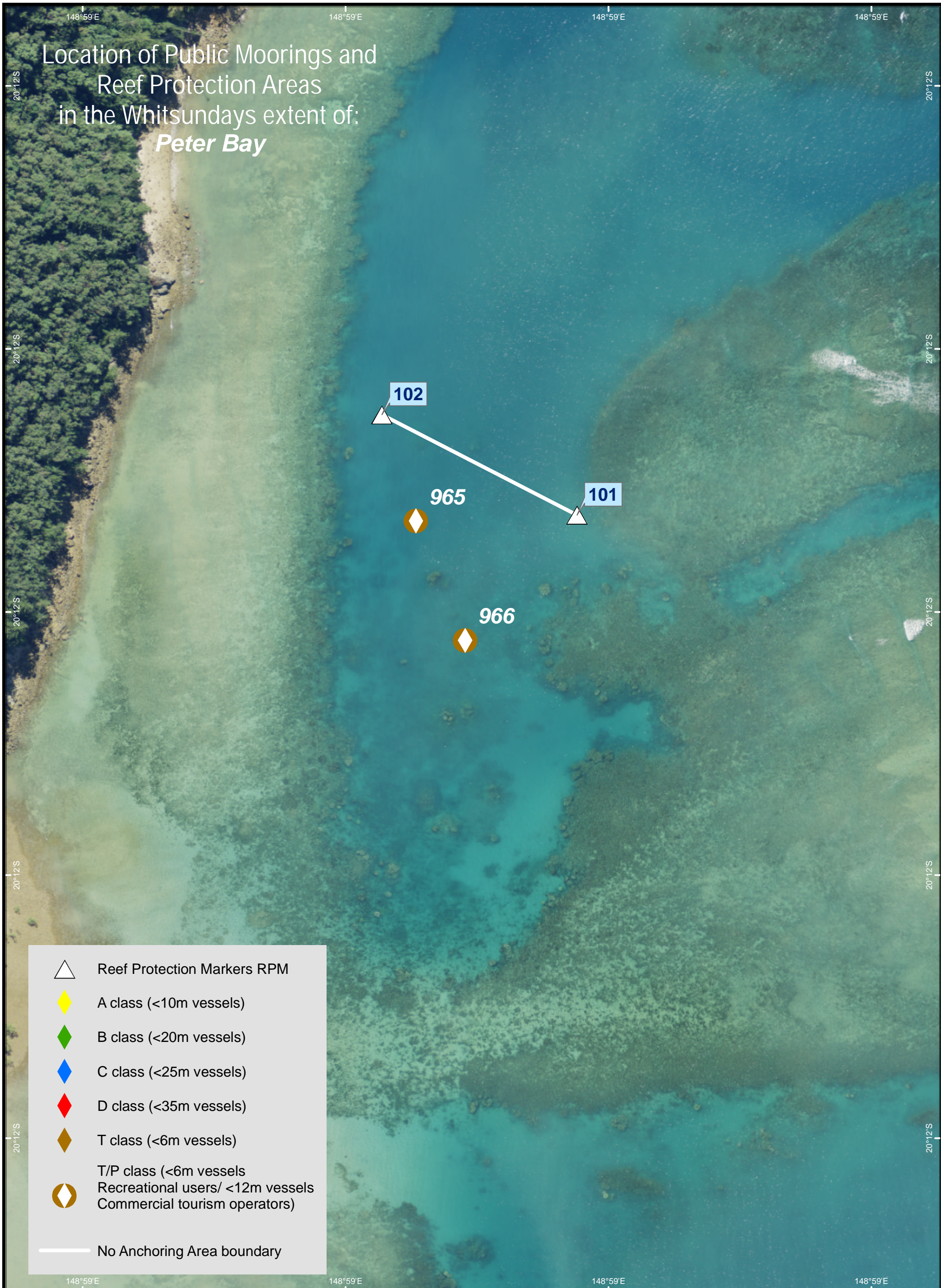






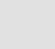
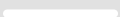
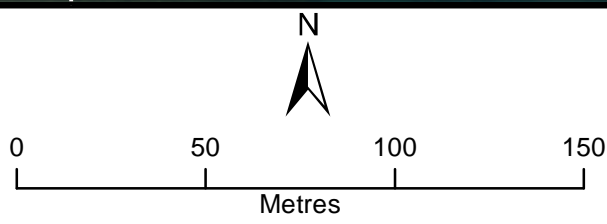


Location of Public Moorings and
Reef Protection Areas
in the Whitsundays extent of:
Peter Bay



-  Reef Protection Markers RPM
-  A class (<10m vessels)
-  B class (<20m vessels)
-  C class (<25m vessels)
-  D class (<35m vessels)
-  T class (<6m vessels)
-  T/P class (<6m vessels
Recreational users/ <12m vessels
Commercial tourism operators)
-  No Anchoring Area boundary



COORDINATE SYSTEM: GCS GDA 1994
HORIZONTAL DATUM: GDA 1994

