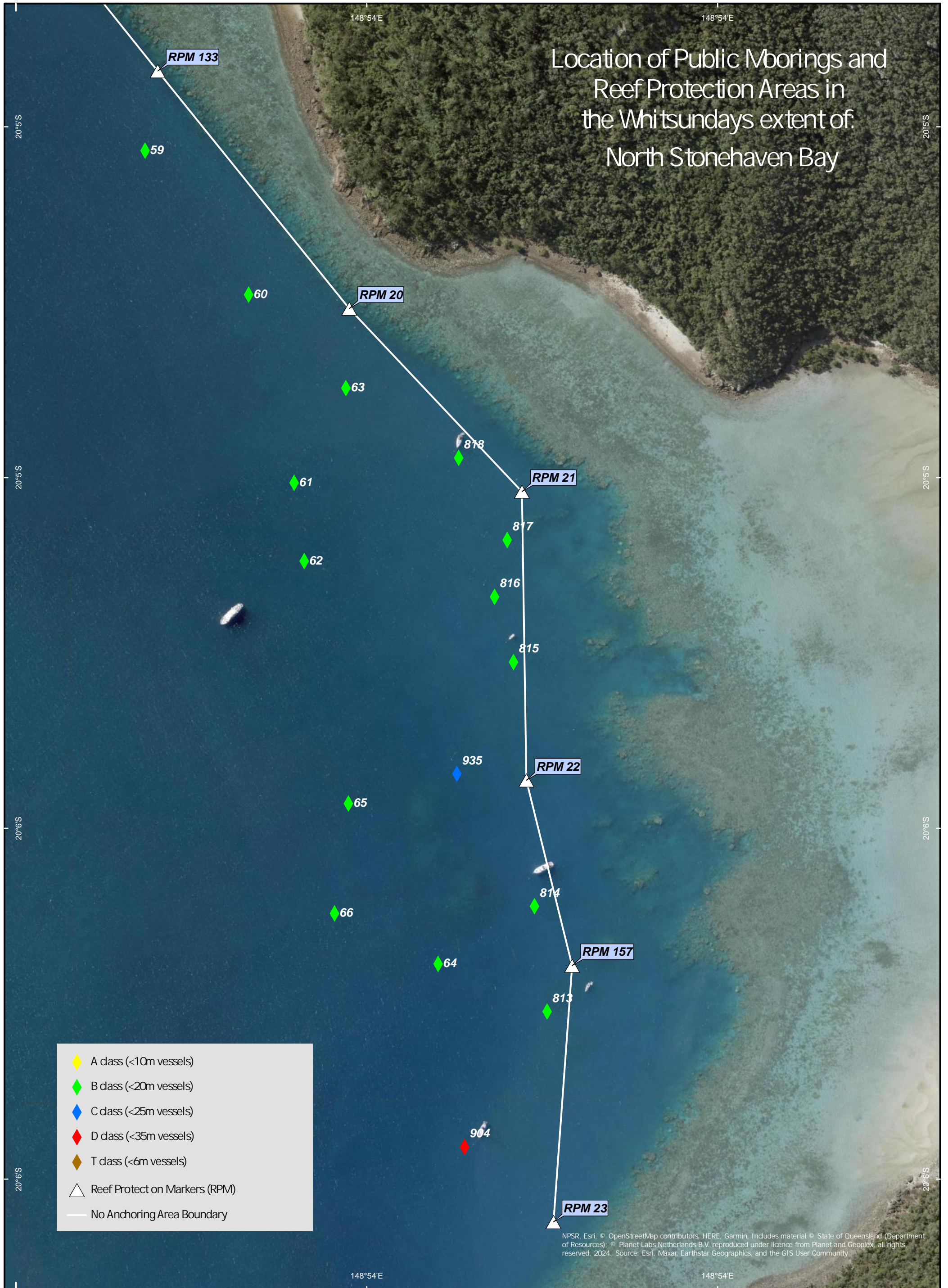
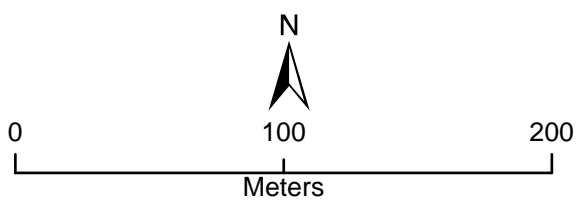


Location of Public Moorings and Reef Protection Areas in the Whitsundays extent of: North Stonehaven Bay



- ◆ A class (<10m vessels)
- ◆ B class (<20m vessels)
- ◆ C class (<25m vessels)
- ◆ D class (<35m vessels)
- ◆ T class (<6m vessels)
- △ Reef Protection Markers (RPM)
- No Anchoring Area Boundary

NPSR, Esri, © OpenStreetMap contributors, HERE, Garmin, Includes material © State of Queensland (Department of Resources), © Planet Labs Netherlands B.V. reproduced under licence from Planet and Geoplex, all rights reserved, 2024. Source: Esri, Maxar, Earthstar Geographics, and the GIS User Community



COORDINATE SYSTEM: GCS GDA 1994
HORIZONTAL DATUM: GDA 1994

