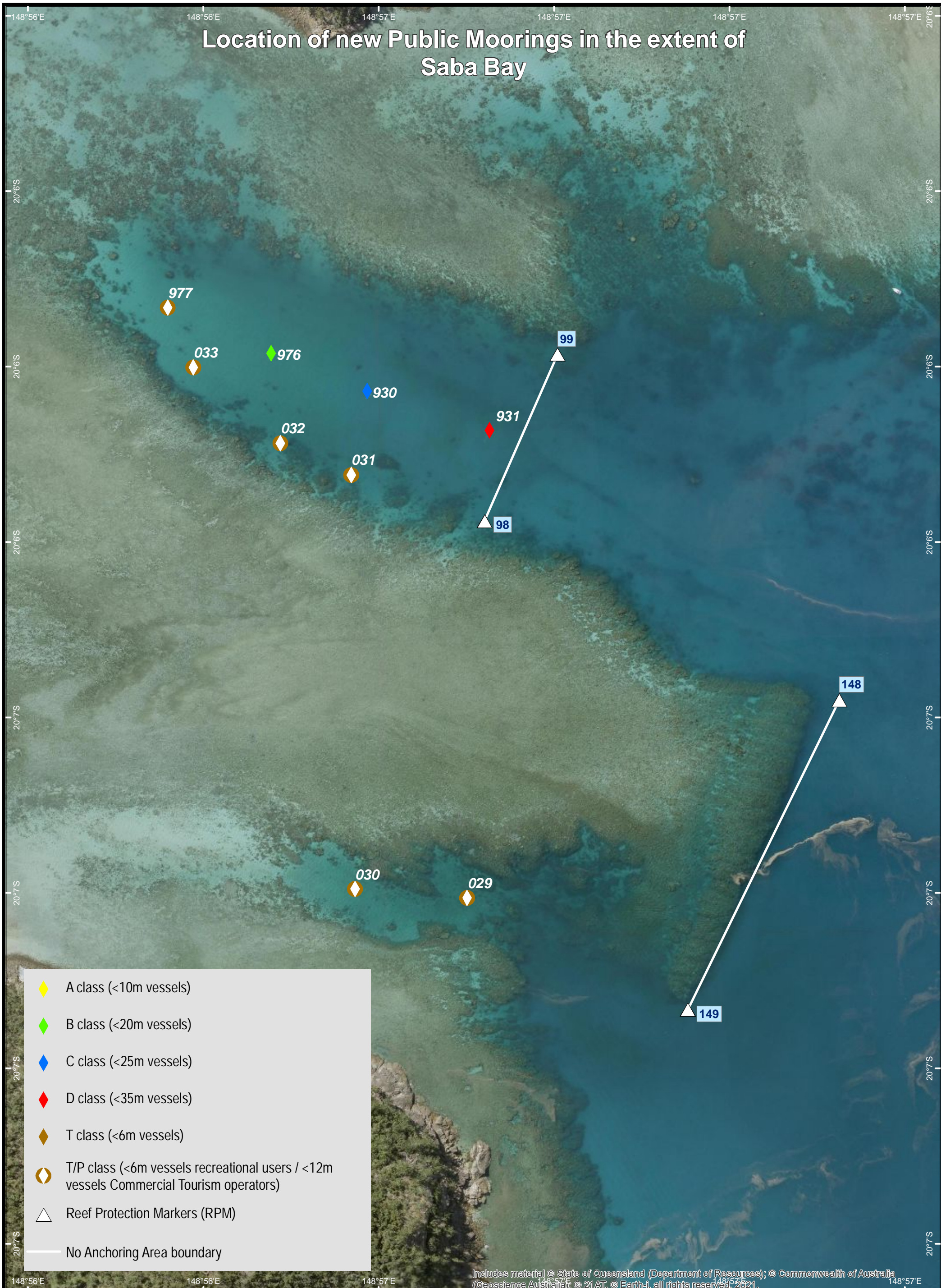
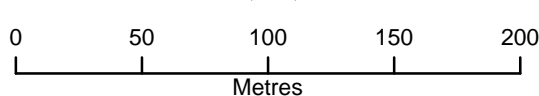


Location of new Public Moorings in the extent of Saba Bay



- ◆ A class (<10m vessels)
- ◆ B class (<20m vessels)
- ◆ C class (<25m vessels)
- ◆ D class (<35m vessels)
- ◆ T class (<6m vessels)
- ◊ T/P class (<6m vessels recreational users / <12m vessels Commercial Tourism operators)
- △ Reef Protection Markers (RPM)
- No Anchoring Area boundary

Includes material © State of Queensland (Department of Resources); © Commonwealth of Australia (Geoscience Australia); © 21AT, © Earth-i, all rights reserved, 2021.



COORDINATE SYSTEM: GDA2020
HORIZONTAL DATUM: GDA2020

